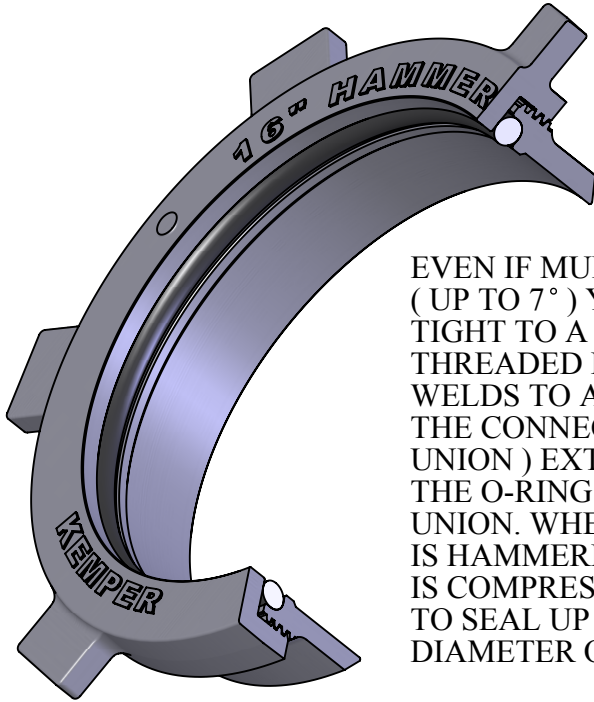
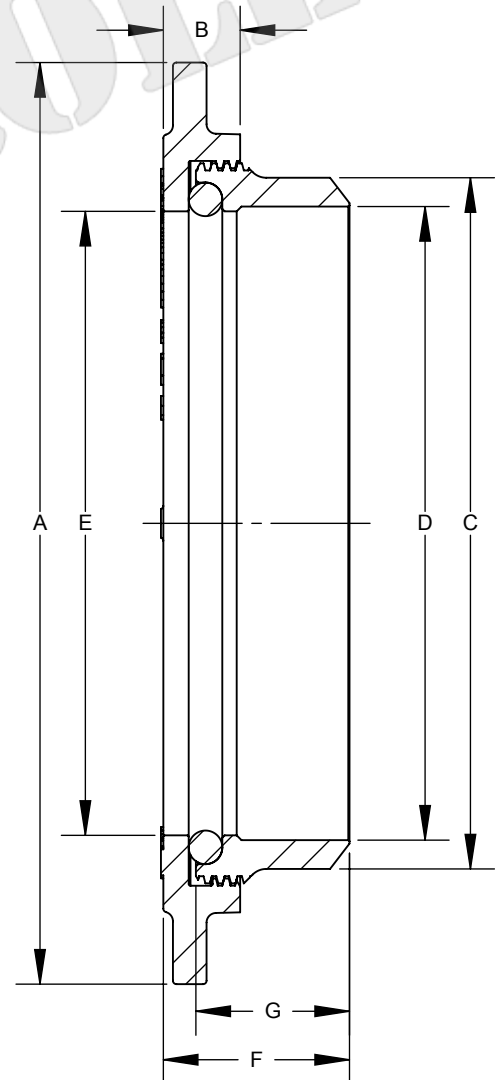


HAMMERSEALS



EVEN IF MUD TANKS ARE NOT ALIGNED PERFECTLY (UP TO 7°) YOU CAN HAMMER THESE TOUGH UNIONS TIGHT TO A NON-LEAK SEAL. THE EXTERNALLY THREADED FEMALE PORTION OF THE HAMMER-SEAL WELDS TO A SCH. 80 STUB PIPE AT THE TANK WALL. THE CONNECTING PIPE (NOMINAL SIZE DEFINES THE UNION) EXTENDS THROUGH THE NUT COMPONENT, THE O-RING AND THEN THE FEMALE PORTION OF THE UNION. WHEN THE INTERNALLY THREADED LUG NUT IS HAMMERED TIGHT ONTO THE FEMALE, THE O-RING IS COMPRESSED INTO AN OBLONG CROSS SECTION TO SEAL UP TO 150 PSI AGAINST THE OUTSIDE DIAMETER OF THE CONNECTING PIPE.

PART NO.	A	B	C	D	E	F	G
PS300A	8.38"	2.00"	4.50"	3.94"	3.75"	3.50"	3.00"
PS400A	9.50"	2.00"	6.63"	5.88"	4.81"	3.69"	3.00"
PS600A	11.68"	2.00"	8.63"	7.88"	6.88"	5.19"	4.50"
PS800A	13.75"	2.00"	10.75"	10.00"	8.88"	5.19"	4.50"
PS100A	18.00"	2.00"	12.75"	12.00"	11.00"	5.19"	4.50"
PS120A	19.75"	2.00"	14.00"	13.13"	13.00"	5.19"	4.50"
PS130A	19.75"	2.00"	14.13"	13.50"	13.50"	5.19"	4.50"
PS140A	21.38"	2.00"	16.00"	15.00"	14.25"	4.69"	4.00"
PS160A	24.00"	2.00"	18.00"	16.50"	16.25"	4.85"	4.00"
PS180A	26.00"	2.25"	20.00"	18.81"	18.25"	4.56"	4.00"
PS200A	28.00"	2.25"	22.00"	20.81"	20.25"	5.63"	5.00"





HAMMERSEALS

PART NO.	CONNECTS TO NOMINAL SIZE OILFIELD PIPE:	FEMALE COMPONENT WELDS TO:	DESCRIPTION	WT.
PS300A	3" (3 1/2" O.D.)	4"	3" HAMMERSEAL UNION ASSEMBLY	19.6 lbs
PS400A	4" (4 1/2" O.D.)	6"	4" HAMMERSEAL UNION ASSEMBLY	23.0 lbs
PS600A	6" (6 5/8" O.D.)	8"	6" HAMMERSEAL UNION ASSEMBLY	33.2 lbs
PS800A	8" (8 5/8" O.D.)	10"	8" HAMMERSEAL UNION ASSEMBLY	39.5 lbs
PS100A	10" (10 3/4" O.D.)	12"	10" HAMMERSEAL UNION ASSEMBLY	55.3 lbs
PS120A	12" (12 3/4" O.D.)	14"	12" HAMMERSEAL UNION ASSEMBLY	62.0 lbs
PS130A	13" (13 3/8" O.D.)	13" (CASING)	13" HAMMERSEAL UNION ASSEMBLY	53.0 lbs
PS140A	14" (14" O.D.)	16"	14" HAMMERSEAL UNION ASSEMBLY	71.2 lbs
PS160A	16" (16" O.D.)	18"	16" HAMMERSEAL UNION ASSEMBLY	92.4 lbs
PS180A	18" (18" O.D.)	20"	18" HAMMERSEAL UNION ASSEMBLY	100.9 lbs
PS200A	20" (20" O.D.)	22"	20" HAMMERSEAL UNION ASSEMBLY	129.3 lbs